

THE TOWPATH

Published quarterly (January - April - July - October) by

NEW BREMEN HISTORIC ASSOCIATION

P.O. Box 73 - New Bremen, Ohio 45869-0073

(Founded in 1973)

VISITING HOURS: 2:00-4:00 p.m. Sundays - June, July, August
(Or anytime, by Appointment)

DUES: \$10.00 Per year / Per person

(Life Membership: \$100.00 Per person)

January - 2002

OFFICERS OF N.B. HISTORIC ASSOC.

- (02) Lawrence Holmer, President/Trustee... 629-3738
 (03) Larry Dicke, Vice-President/Trustee.....
 (02) Drusilla Meyer, Secretary/Trustee..... 629-3495
Dru Meyer, Spec.Events (e-mail: mdmeyer@bright.net)
 (04) Thomas Braun, Treasurer/Trustee..... 629-8902
Tom Braun, Genealogy (e-mail: TGBraun@nktelco.net)
 (02) Lawrence Egbert, Maint./Trustee..... 629-2578
 (03) Carl Roediger, Maintenance/Trustee.... 629-2549
 (04) Jerry Brown, Trustee..... 629-2299
 (03) Mary Paul, Trustee..... 629-2213
 (04) R. Jay Stauffer, Trustee..... 629-3334

"APPOINTEES"

- Delores Stienecker, Curator 629-2685
 Joyce Holdren, Curator 629-3474
Joyce Holdren, Curator (e-mail: tojoho@bright.net)
 Phyllis Cox, Corresponding Secy..... 629-2114
 Genevieve Conradi, Historian Scrapbook... 629-2764
 Susie Hirschfeld, Membership Archives..... 629-2133

- Lucille Francis, "Towpath" & Membership... 629-3148
 Susie Hirschfeld, "Towpath" Bulk Mailing.... 629-2133
"The Towpath" is printed by Lee's Printing - New Bremen, Ohio

MEETINGS ARE HELD FIRST TUESDAYS
730 p.m. at the N.B. Library (winter time)

THE TOWPATH is a historical reflection of New Bremen and the surrounding area - researched, written, and/or edited by Lucille (Topp) Francis, EDITOR, and published quarterly by the New Bremen Historic Assoc. Any stories and/or pictures that our readers are willing to share are welcomed.

COMPLIMENTARY COPIES

With each quarterly mailing of *The Towpath*, a number of Complimentary Copies are sent to folks we think might be interested in reading one or more of the articles in that issue. If you are one of these people and would like to continue receiving future issues, please send the appropriate amount of dues (subscription) to the above address. (P.O. Box 73)

MEMORIAL DONATIONS

Memorial donations are welcomed in any amount. When donations for any one person or couple have reached \$100.00, a brass plate engraved with their name(s) is attached to the Memorial Plaque.

◀◀ UPCOMING EVENT ▶▶

◀◀◀◀

✂ ANNUAL DINNER - MARCH 18, 2002 ✂

WHERE? - Holy Redeemer Church Parish Center

SPEAKER: Thomas Block

SUBJECT: Lighthouses

Thomas Block is a member of the United States Lighthouse Society, Great Lakes Lighthouse Keepers Association, and the American Lighthouse Foundation.

Tom and his wife, Barbara (Poppe), have been visiting, photographing, and learning about lighthouses for the past 8 years. They have traveled from the east coast to the west coast, to the Gulf coast, along the Great Lakes, and even to Hawaii searching out lighthouses, and have been to over 400. They have taken guided boat tours on the Great Lakes, the Hudson River, Long Island, Narragansett Bay (Rhode Island), Boston Harbor, and along the coasts of Maine and Massachusetts.

Tom has been giving lighthouse talks and presentations to various groups around his hometown of Rockford, Illinois for the past 2 years. He enjoys sharing his enthusiasm for lighthouses with one and all. He has stories and history about every lighthouse, but he promises not to tell about every one he knows!!
[information provided]

◀◀◀◀

BIOGRAPHY: Thomas Block was born and raised in New Bremen, the youngest of 9 children of Henry & Edna (Greiwe) Block. He attended the New Bremen schools and graduated from N.B.H.S. in 1950. While in high school, he played both basketball and baseball. After graduation, he spent 4 years in the U.S. Navy. He is married to fellow-graduate, Barbara Poppe, daughter of Arnold & Irene (Rismiller) Poppe and they have 3 children: Susan, Sarah, and Charles ("Chip"). Tom & Barb reside in Rockford, Illinois, but keep in close touch with their N.B. classmates and other New Bremen friends and relatives. They will appreciate seeing many of them again on March 18th when Tom gives his "Lighthouse" presentation.
[by Jerry Brown]

WILL YOU BE THERE?

PRESIDENT'S REPORT

The year 2001 has been a very busy year for the board members of the New Bremen Historic Association. We wish to thank those who served on the board in the past and left the early part of the year - Dorothy Hertenstein as Trustee/Secretary, Jill May as Trustee/Historian, and Bea Young as Co-Curator. We welcomed two new Trustees - Mary Paul and Jay Stauffer. Also, Gen Conradi was appointed as the new Historian.

We wish to thank those who supported the following three major events of the year:

(1) The Annual Dinner/Meeting was held Monday, March 19th at Faith Alliance Church. Approximately 170 people were in attendance to see and hear the slide program given by John Dickman and Tom Braun about their visits to Germany.

(2) Approximately 150 people found their way to the museum grounds for our 3rd Annual Summer Picnic on Sunday, June 3rd. Antiques and collectibles were brought to be appraised by Monty McDermitt, and horticulturist Alan Fenters was on hand to give advice about plants and gardening. The Miami-Erie Boys and Rita Heitkamp provided some musical entertainment.

(3) "Angels Through the Ages" was the theme for our 27th Annual Christmas Tree Festival. There were 33 trees and displays exhibited by various groups and individuals for viewing by an estimated 250 people who attended on Saturday & Sunday, December 1st and 2nd. Candy canes were handed out to 58 children by Mr. & Mrs. Santa Claus on Sunday afternoon. Prizes were distributed as follows: 15 raffle prizes, 34 adult door prizes, and 16 children's door prizes. We would like to thank everyone who donated prizes and/or set up trees & displays for the Festival. (See the prize listings, etc. on the green insert.)

The float we decorated for the Bremenfest parade on August 19th won 1st place in the theme category and 2nd place in the civic category. We extend our thanks to those

who worked on and donated items to be displayed on the float. The parade theme this year was "Small Town Pride." We chose "We Preserve Our Pride" as our theme.

This past summer saw major repairs and improvements being made at the museum. The museum barn, built about 1912 at the rear of the museum property, received new wood siding, new vinyl windows, and steel entrance and overhead doors. A concrete base was poured under the front overhang of the barn and old historic bricks were laid within the perimeter to form a porch/patio. Also, a new concrete sidewalk was poured from the barn to the brick patio behind the house. Hired to do the concrete & carpenter work were Mark Kitzmiller and Ed & Alan Bergman. Ashley Egbert was hired to paint the new siding. "Grandpa" Lawrence Egbert and Rev. Lawrence Holmer also helped with the painting.

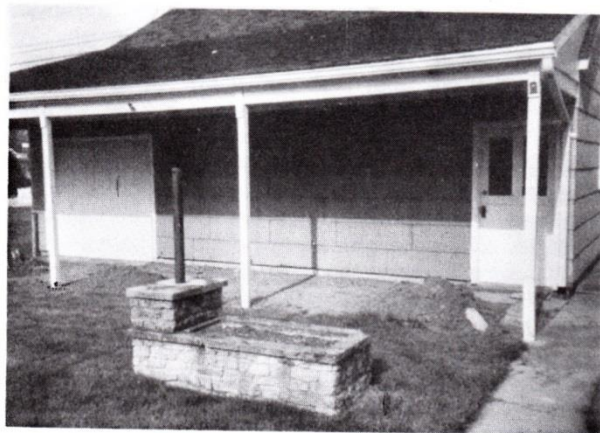
John Hoffman and Hoffman Decorating were contracted to paint the exterior of the house. Thanks to them for their donation of the paint for this project.

We wish to thank Tom Braun, Trustee/Treasurer & Genealogist, for adding over 500 obituaries to the obituary file at the New Bremen Library. Thanks also to John Dickman for donating the profits and royalties from sales of his new book, "Recipes & Reminiscence"; to Lucille Francis, Editor of "The Towpath"; and to Larry Kuhn of Lee's Printing for printing it. Also, to the many others who have helped the Association this year in so many different and important ways, we extend our thanks.

We look forward to 2002 and to the Annual Dinner on March 18th; the 4th Annual Summer Picnic in June; the finishing of the work on the barn, both outside and inside; and to the curators' project of preserving the many old copies of the *New Bremen Sun* in acid-free conditions.

Thanks to all of you for paying your annual dues or becoming lifetime members - also for your memorial gifts and other donations. We are always open to suggestions on how to improve the museum property and/or the Association.

L.T. Holmer, President



Front of barn before renovation. Planter was removed.



[Renovation photos by Gen Conradi, Historian]
North end of museum barn before 2001 renovation.

MAINTENANCE REPORT

by Lawrence Egbert

Many improvements were made at our facilities this past year - the museum barn was given new "board and batten" siding, new windows & doors, new underground wiring (by Dale Heitkamp of Heitkamp Electric), a brick floor was laid under the barn's overhang creating a nice porch, and new sidewalks were poured between the buildings - all at a cost of approximately \$11,300.00.

The museum was given a new coat of paint, repairs were made to the windows, and improvements were made to the downspouts & drainage system for a total cost of approximately \$3,700.00. Also, the furnace was in need of repair, costing over \$350.00.

The rotted siding on the outdoor oven was replaced with different used siding which matched the original. The siding was provided and the work was done on a volunteer basis by Mark Kitzmiller and the Bergman brothers, Ed & Alan. The building will need to be repainted this summer, also the cellar door on the summer kitchen needs painting. The Kitzmiller/Bergman crew also put a gravel perimeter around all the buildings to make for easier maintenance.

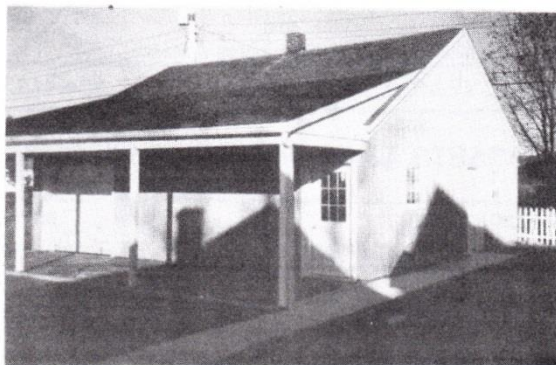
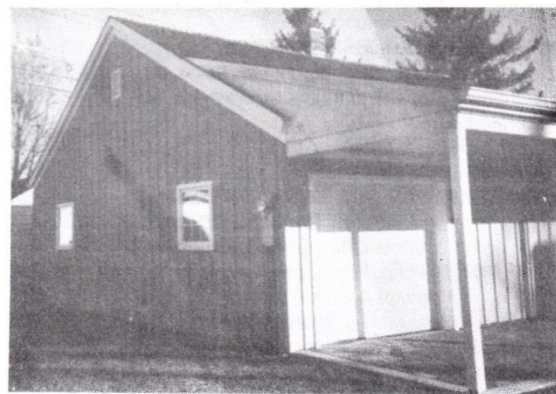
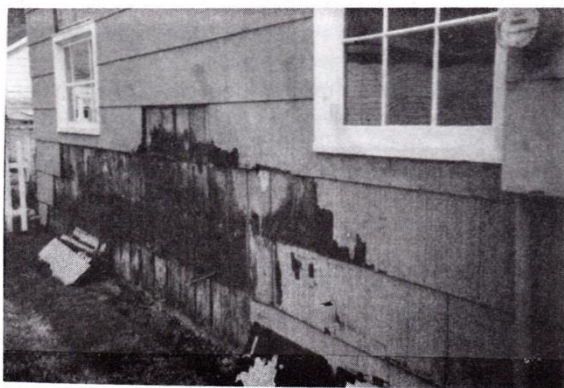
There are other improvements we would like to make in the future. We would like to re-lay the brick patio area

between the house and the summer kitchen in a way similar to the porch in front of the barn in order to create a level (and safer) walking surface. We would also like to make our premises more handicapped-accessible by adding sidewalks along the north and back sides of the house leading to the brick patio area.

We would like to make some changes to the interior of the back museum building (aka "the barn"). We need to make some electrical changes for better lighting, remove some walls, and re-cover the ceiling & the interior of the outside walls to provide a better means to display items.

In 1999, with the help of Crown Equipment Corp., we were able to close the old graveled driveway north of the museum house by excavating the old gravel-hardened dirt and leveling the area with new fill dirt and sod. In December, 2001, the three sweet-gum trees planted along the north side of the house were moved (also with the help of Crown) out into this area in order to give the trees more room to grow and to create more space between them and the house.

We are proud of what we have accomplished the past year and look forward to more improvements in the future. As is always the case, we can only make these improvements after our financial reserves have again been built up through payments of membership dues, donations, and perhaps more money-making projects.



New Bremen Historic Association Annual Financial Report for 2001 <i>Thomas Braun, Treasurer</i>	
ASSETS AS OF JANUARY 1, 2001	
CHECKING ACCT.	\$2,272.17
CERT. OF DEPOSIT / PROM. NOTE	\$18,258.65
TOTAL ASSETS	\$20,530.82
INCOME	
MEMBERSHIP: Regular yearly dues	4,144.00
Lifetime Memberships	2,050.00
Membership Donations	810.00
MEMORIAL Donations	430.00
DONATIONS: Misc. (Visitors, genealogy, etc.)	198.50
GRANT & MATCHING FUNDS	850.00
INTEREST (includes accrued C.D. interest)	1,126.18
ANNUAL DINNER (161 tkt. sales @ 8.00/ea.)	1,288.00
COMM. PICNIC (Food, Ice Cream, Appraisals)	557.06
CHRISTMAS RAFFLES (ticket sales)	864.38
MERCHANDISE SALES	779.85
S/H charged on mail orders of mdse.	64.50
TOTAL YEARLY INCOME	\$13,162.47
EXPENSES	
UTILITIES: Electric (N.B. Utilities)	235.34
Water (N.B. Utilities)	28.00
Gas (D.P. & L. & Vectren)	1,187.86
INSURANCE & Treasurer's Bond	577.00
IMPROVEMENTS & MAINTENANCE:	
Improvements to barn, porch, sidewalks, etc.	11,329.29
Painting & Repairs to museum, drainage, etc.	3,678.05
Furnace repair	352.68
Lawn mowing & trimming	435.00
CURATORS: Display Materials, etc.	244.23
OFFICE EXPENSE: P.O. Box Rent (1.5 years)	82.50
Safety Deposit Box Rent	16.00
Other Office & Misc. Expenses	439.05
TOWPATH: Printing, Envelopes, Labels	3,268.86
Postage & Bulk Permit	635.49
Research & Office Expenses	190.29
ANNUAL DINNER expenses	850.36
COMMUNITY PICNIC expenses	209.02
CHRISTMAS FESTIVAL expenses	193.31
MDSE. purchased for resale	259.17
Postage on mailed mdse. sales	50.53
State sales tax on mdse. sold	38.42
MISC. - Memberships (Ch./Commerce & Mecca)	110.00
TOTAL YEARLY EXPENSES:	\$24,410.45
ASSETS AS OF DECEMBER 31, 2001	
CHECKING ACCT.	\$551.20
CERT. OF DEPOSIT / PROM. NOTE	\$8,731.64
TOTAL ASSETS	\$9,282.84

CURATORS' YEAR-END REPORT

The curators have been very busy this year. We now have many more pictures of New Bremen on display. 96% of all pictures have been framed using acid-free backing and then sealed to prevent deterioration and insect damage.

Documents dating from the 1800s have been encapsulated to prevent further deterioration and they can now be handled.

We are in the process of updating the military room upstairs and are also moving other items from room to room for a continuity of displays. Many new articles have been received and will be displayed next summer.

One of our goals for 2002 is to preserve the *New Bremen Sun* newspapers and to create a display that will allow some of them to be viewed by the public. We are also planning to work in the museum barn to better display the items being stored there.

We would like to acknowledge the efforts put forth by our "handyman", Carl Roediger. He can always be counted on when repairs need to be made or when we need something done to create new display areas. Among the projects he has helped us with are putting up new pegboards, both downstairs and in our military room. He is also working on building quilt racks to better display our quilts. He made hinged glass "lids" for the 2 bookcase units so that they can be used as display cases. Also, he recently made a new walnut plaque for memorial donation brass plates. We really appreciate Carl's helpfulness.

We would like to extend a special THANK YOU to anyone else who contributed time, items and/or money to our New Bremen Historic Museum. We are looking forward to a good year and hope to see you there this summer.

The curators, Delores & Joyce

◆NEW ACQUISITIONS◆

◆ITEMS FROM LUCILLE (FARK) MOELLER ESTATE: PICTURES:

- Interior of St. Peter's Church, facing west (after remodeling efforts of 1950-1951 changed the chancel from the south side of the church to the west side.)
- 34th anniversary of St. Peter's Evangelical League (shows the chancel on the south side of the church - see page 6.)
- 1929-1930 N.B.H.S. Freshman class picture. (see the April, 1998 issue of "The Towpath")
- 1901 St. Paul's Church confirmation picture (includes Fredonia (Hirschfeld) Fark. (See pg. 9)
- Charcoal portrait of unidentified young girl & boy (former owner's name on back - Martin Knost).
- Empty picture folders.
- Birth Certificate: George Fark (Lucile's father).
- Elmhurst Hymnal (1921)
- PROGRAM: "I Love America", performed at the New Bremen Sesquicentennial celebration in 1983.

•**NEWSPAPER:** Sidney Daily News - 6/10/1941
(has section about New Bremen).

BOOKS/BOOKLETS:

- John Hancock Life Ins. Booklet: "George Washington, the 1st Great American".
- "Lee's Cyclopedic Question Settler" (1901).
- "Essentials of Geography - 2nd Book" (once belonged to Grace Marjorie Jordan).

from Ron & Ned Moeller, Karen (Moeller) Farley

♦**PICTURE:** Louis & Emma (Wulfeck) Huenke on their 50th wedding anniversary (1932) with their family.

from Dorothy (Komminsk) Johnson

♦**PICTURE:** Rathbone Lodge #543 Knights of Pythias marching club (early 1890s.) (see the April, 1999 issue of "The Towpath").

from Tom Block

♦**AUTOGRAPH BOOK:** 1937-1939.

Ruth Evelyn McKay

♦(2) **SCRAPBOOKS:** 25 years of Child Guidance.

ATTACHE CASE.

from Marie Anthony

♦**50-YEAR CLASS REUNION BOOK:** Class of 1951.

from Carl Roediger

EDITOR'S NOTE: The following items were received in response to the article in the October, 2001 issue of "The Towpath" about our "Authors' Nook" collection. We appreciate the thoughtfulness of Mike Staton and Jim Halsema for providing us with copies of their books to add to our collection.

♦**BOOK:** "The Fighting Bob: A wartime history of the USS Robley D. Evans (DD-552)", dedicated to James E. Staton, written by his son, Michael Staton. (inscribed)

from Michael Staton

♦**BOOK:** "E.J. Halsema: Colonial Engineer" (inscribed)

(see letter in "From the Mailbox")

from James J. Halsema

♦**PROGRAM:** Posthumous award (3/26/1984) of the Baguio (Philippines) Medal to Eusebius J. Halsema, Baguio City Mayor from 1920-1937, given to James J. Halsema & Betty (Halsema) Foley.

from James J. Halsema

[NOTE: If you do not see the item you gave listed here, it may not have been processed as yet. Look for it in the next issue.]



WHO ARE THESE CHILDREN?

Can anyone help us to identify this cute little girl and boy? The name of Martin Knost was written on the back of the picture so he must have paid to have the picture made. The name "Martin" was also written behind each child's picture. Martin Knost and his wife, Rosina (Paul), did not have any children, however, so it is a mystery as to who these children are and how Lucile (Fark) Moeller happened to have the picture.



ON THE RIGHT

Helena (Moore) Kuck & her brother, Walter Moore, who is 4 years Helena's junior.

Among the recent donations to the museum were a 2-piece wool W.W.II WAC uniform (blouse/jacket & A-line skirt) and a handbag (as shown on the left, being worn by a friend), donated by Helena (Moore) Kuck. Included was the following write-up by Helena about her days in the service:

REMEMBERING MY MILITARY DAYS

I enlisted in the WAAC (Women's Army Auxiliary Corps) on May 24, 1943 as a telephone switchboard operator. On August 11, 1943, when the WAAC became part of the Army (WAC), I re-enlisted. After a year in the states, I left for overseas duty in the European Theater of Operation (ETO) serving in England, France and Germany.

It was in France that things became a little scary - the Battle of the Bulge! For a while it was uncertain just how the battle would go. They told us that they had us ready to be evacuated, if necessary. I was working on the switchboard, trying to put calls through and, when I couldn't get through, having to report that the lines were down.

We were under curfew - no one was to be out on the streets after a certain time in the evening. The German soldiers were infiltrating our lines, so well-disguised as American soldiers that they couldn't be told apart one from the other. One evening we heard gunfire in our courtyard. We assumed that we were either chasing or had caught someone.

Fortunately, the Battle of the Bulge turned in our favor. After six months in France, I was stationed in Germany for six months. It was while I was there that the war ended and, on October 11, 1945, I sailed for the states on the Queen Mary, arriving at Fort Dix, New Jersey Separation Center on October 16, 1945. On October 20, 1945, I received my discharge and my service in the Army was over. I've never regretted it.

by Helena Kuck

Helena is a Pennsylvania native. She married Myron Kuck of Wapakoneta, who also served in the Army. They had 2 sons - Don Kuck of New Bremen and David Kuck of Wapakoneta. Helena and Tina (Mohrman) Garcia are the only 2 women currently members of New Bremen's American Legion Post 241. Helena is also a member of the Legion Auxiliary.



YOUNG PEOPLE'S EVANGELICAL LEAGUE of St. Peter's Church

FRONT: Viola Mueller (organist), Hedwig Paul (Honduran girl *in black*), Pauline Egbert (mountain girl), Mrs. Anna Klutey (Rumanian girl), Grace Quellhorst (flag bearer), Druscilla Fark (flag bearer), Carl Mueller (Korean), Laura Wuebbenhorst (Mexican girl), Pauline Paul (Persian girl *in black*).

MIDDLE: Raymond Wierth (prologue *in suit*), Elmer Ziegenbusch (Hindu), Omer Luedeke (teacher among the Negroes *with bowtie*), Wilson Maurer (Jew), Bernice Ludeka (Polish girl), Margarete Roettger Japanese girl), Rev. Henry C. Klutey (Minister), Bertha Wierth (Columbia), Itala Wierth (Chinese girl), Elsa Mueller (Hungarian girl), Irene Heinfeld (Italian girl), Hilda Huckeriede (Indian girl), Clifford Wierth (Armenian).

BACK (CHORUS): Walter Klosterman, Donald Fark, Orville Heinfeld, Theophil (Tafe) Mueller, Merlin Roettger, Harold Mueller, Irene Ekermeier (Christian flag bearer), Verona Kettler, Marie Fark, Elfrieda Heinfeld, Gertrude Heinfeld, Lucile Fark, Bernice Roettger.

[Photo from the Lucile (Fark) Moeller collection - Identifications by Verona (Kettler) Hirschfeld]

On February 22, 1925, the Young People's Evangelical League of St. Peter's Church presented "Christ In America", a play showing the opportunity for mission work among the foreign-born citizens of this country. The play was presented in costume, with Bertha Wierth portraying the leading role of Columbia. This play and the program preceding it were given in St. Peter's Church in honor of the 34th anniversary of the League's founding.

The program opened with an organ prelude by Miss Viola Mueller, followed by the invocation of Rev. Henry C. Klutey, prayers by Rev. Nathan E. Vitz of Zion's Church and Rev. John C. Melchert of St. Paul's Church, a history of the League by Elmer Ziegenbusch, a reading by Itala Wierth, a vocal solo by Miss Elsa Mueller and a cornet solo by August Mueller. Hymns were sung from the Evangelical Hymnal and the May, 1921 Elmhurst Hymnal - "Fling Out The Banner" and "Blest Be The Tie That Binds."

YOUNG PEOPLE'S SOCIETY

St. Peter's Church

The first Young People's Society of St. Peter's Church was organized on Sunday, February 22, 1891 during the pastorate of Rev. A. Merkle. On September 15, 1895, during the pastorate of Rev. Christian Fischer, the Young People's Society and the Sunday School presented the congregation with a large pipe organ in honor of the church's 50th anniversary at a cost of \$1300. They also purchased church benches and a piano when a new addition to the north and a Sunday School room and choir loft were completed by March 6, 1904.

After the arrival of Rev. Henry C. Klutey in December, 1923, the Young People's League became quite active in putting on plays. The first play to be advertised in the New Bremen Sun was "The Pill Bottle", a 4-act play which was presented on Friday evening, February 29, 1924 at the Opera House. Participants in this play were Irene Ekermeier, Mrs. Martha Ekermeier, Irene Heinfeld, Hilda Huckeriede, Harold Jung, Rev. H.C. Klutey, Mrs. H.C. Klutey, Bernice Ludeka, Omer Luedeke, Elsa & Viola Mueller, Marie Poppe, Margarete Roettger, Bertha Wierth, Itala Wierth, Raymond Wierth, Clara Wuebbenhorst and Elmer Ziegenbusch.

On Friday evening, February 26, 1926, a play entitled "The Honorable Mrs. Ling's Conversion", under the direction of Rev. H.C. Klutey, was given in the Opera House. Tickets were sold for 35¢ at the First City Bank. Seats were reserved at the Schroeder Hardware Store. All seats were sold long before the doors opened.

On Thursday and Friday evenings, February 27-28, 1927, Rev. Klutey and the Young People's League presented "The Reverend Mister Rookie Arrives In India" in the St. Peter's Sunday School hall. This play portrayed the actual experiences of the American Evangelical Mission in the central provinces of India.

On Friday evening, November 25, 1927, a 3-act play entitled "A Dream of Queen Esther" was presented by the St. Peter's Young People's League at the Opera House. Participants included: Evelyn Arkenberg, Irene Ekermeier, Marie Fark, Dorothy Geib, Elfrieda Heinfeld, Gertrude Heinfeld, Bernice Ludeka, Omer Luedeke, Wilson Maurer, Elsa Mueller, Irene Neuman, Marie Poppe, Merlin Roettger, Marie Tangeman and Itala Wierth.

On Sunday, February 19, 1928, the 37th anniversary of the founding of the St. Peter's Young People's League was observed with a program held in the church auditorium. Invitations were extended to the Young People's organizations of St. Paul's and Zion's Churches of New Bremen and Immanuel Church of Kettlersville. Participants other than those mentioned in previous programs were Agnes Eisen and Laura Niederhaus.

On Tuesday and Wednesday evenings, October 23-24, 1928, a play entitled "A Stitch In Time" was given in the dining hall of St. Peter's Church by the Young People's League. [After Rev. Klutey's untimely death on December 27, 1928, there were no more reports of plays given.]

In March, 1935, an Intermediate Young People's League was begun for young people under 16 who were in the confirmation class. Officers were Edison Huckeriede, Jean Tangeman, Virgil Nedderman, and Helen Wuebbenhorst.

Those over the age of 16 were part of the Young People's League. Officers in 1936 were Lucille Roettger, Ralph Kuhlhorst, Dorothy Fogt, and Wilbur Warner. The League held receptions, ice-cream socials and a dinner for the new confirmands. They started a junior choir, participated in an area volleyball league, and purchased a piano lamp and stapler for the church. The Young People's League later became known as the Youth Fellowship.

Eight of the young people of St. Peter's Church went on to become involved in the ministry: Orrin Schroerluke, Hilmer Neuman, Clifford Wierth, Edgar Wierth, Harold Jung, Theodore Fischer, Hedwig Fischer (later, the wife of Rev. Hubert Konrad), and Miss Hilda Huefe.

REV. HENRY C. KLUTEY

Rev. Henry Carl William Klutey was born at Freelandville, Indiana (near the Illinois border) on 8/30/1886, the oldest son of Mr. & Mrs. William Klutey. He graduated from Freelandville High School in 1905 and went to Elmhurst College in Elmhurst, Illinois from which he graduated in 1908. He then entered Eden Theological Seminary at St. Louis, Missouri and received his diploma from there in 1911.

In June of 1911, Rev. Klutey began his career at Lewisville (Indiana?) and Trail Run, Ohio. On 9/4/1911, he married Anna Henkelman of Bloomington, Illinois.

In 1913, Rev. Klutey went to St. Paul's Evangelical Church at Oak Harbor, Ohio and served there for 10 years until November, 1923, when he accepted the invitation to become the pastor of St. Peter's Evangelical Church in New Bremen, replacing Rev. H.S. von Rague who moved on to Elmore, Ohio. The Kluteys became residents of New Bremen in December, 1923.

Rev. Klutey was very much respected in New Bremen, was a member of the N.B. Business and Professional Men's Association which was organized about 1924-1925, and took an active interest in many of the town's affairs.

Rev. Klutey died at the age of 42 on 12/27/1928, having submitted to major surgery on Christmas morning to alleviate a long-standing unspecified illness. Funeral services were conducted in St. Peter's Church by ministers of the area including Rev. J.C. Melchert of St. Paul's Church, Rev. N.E. Vitz of Zion's Church and Rev. A. Dietze of Kettlersville. He was buried in Evansville, Indiana. He was survived by 2 sisters and a brother, Rev. Emil Klutey, pastor of St. John's Evangelical Church of Tiffin, Ohio.

On 9/1/1929, Rev. Theodore G. Papsdorf accepted the pastorate of St. Peter's Church and served as such until 1948.

[NOTE: Rev. Henry Klutey was NOT related to the Klute family of New Bremen.]

CHURCH BELL FALLS FROM BELFRY

Death narrowly missed Mr. & Mrs. Christ Althoff, aged caretakers of St. Peter's Church, early Sunday morning, June 15, 1924, while they were ringing the large bell suspended in the church steeple, calling members of the congregation together for divine worship. Their escape from serious injury was a miracle and can only be attributed to an act of Providence.

The Althoffs were standing directly beneath the belfry when the heavy tongue of the bell broke loose from its moorings and came crashing through the ceiling above them. Fortunately, both were untouched by the ponderous clapper which buried itself in the floor upon which they were standing. Mr. Althoff was struck by flying splinters from the shattered joists in the ceiling but otherwise the pair was unharmed.

The bell was purchased by the church in 1887 for the new brick structure which was built during the pastorate of Rev. A. Merkle to replace the old frame church and which was dedicated on July 3, 1887. (N.B. Sun - 6/19/1924)

THE YOUNG PEOPLE'S LEAGUE

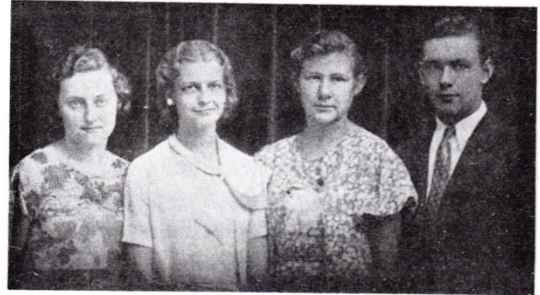
St. Paul's Church

A "Jugend Verein" (Youth Society) was first organized in St. Paul's Church in 1890 during the pastorate of Rev. Martin Buerkle. Few records exist about the early days of this organization, however it was stated that the organization was responsible for the purchase of seats under the balcony and lighting equipment for St. Paul's first brick church built in 1890 and dedicated on 10/18/1891. After the destruction of the church by fire on 1/1/1897, the organization donated lighting equipment for the rebuilt church dedicated 12/5/1897.

In October, 1922, under the direction of the new pastor, Rev. John C. Melchert, the Young People's League of St. Paul Church was re-organized with more than 100 members and became affiliated with the National Evangelical League. Herbert Kettler served as the first president. Devotional meetings were held in the church on Sunday evenings and a business session was held once a month in the dining hall. The League had charge of the English Lenten services. Some of the young people who went on to become involved in the ministry were Herbert Schowe and Otto C. Doenges, both of whom became ministers, and Leona Poppe & Esther Quellhorst (later Mrs. Ewald Kuck) who became parish workers.

In July, 1925, the Young People's League and the Sunday School jointly hosted the convention of the Ohio District Sunday School & Young People's League. The League entertained the new confirmands each spring with a banquet and also sponsored a Lecture Course and gave several plays. Gifts presented to the church by the organization were a pulpit lamp, 100 Elmhurst hymnals (in 1922), and a moving picture machine & silver screen (in 1924.)

In 1933 (our centennial year), the officers of St. Paul's Young People's League were Esther Headapohl (later Mrs. Henry Dicke), Phyllis Nussmeyer (Mrs. James Murtaugh), Gabriel Schaefer (Mrs. Robert Herring), and Frederick Luedeke (pictured below.)



In 1947, during the pastorate of Rev. Emil H. Bassler, the Young People's League became the Senior High Youth Fellowship and was composed of confirmed high school church members (grades 10-12).

St. Paul's Church News Clippings

N.B. Sun - 10/15/1923: Special services in the church auditorium this evening at 7:00 in observance of the 15th anniversary of the founding of the Children's Society. Young People's League at 7:00 p.m.

Rev. J.C. Melchert, Pastor

N.B. Sun - 2/21/1924: Young People's League meeting at 7:00 p.m., featuring a radio concert. A complete radio outfit has been installed at the church since last Saturday, but the first concert was postponed because of inclement weather. Members of the congregation will hear their first radio program at the church Sunday evening when they will listen in on a religious program broadcast from some nearby station.

Rev. J.C. Melchert, Pastor

N.B. Sun - 10/9/1924: CONCERT by the Overseas Colored Male Quartet, augmented by the Orchestra of St. Paul's Church, given under the auspices of the Young People's League of St. Paul's Church at the Opera House on Thursday Evening, October 16, 1924 at 7:30 p.m.

Adults - 50¢ — Children under 12 - 25¢

N.B. Sun - 9/10/1925: Tuesday evening the New Bremen Business & Professional Men's Association met at the Community Building on South Herman St. for dinner and a meeting. The dinner was served by the Mothers' Club, which also had charge of a brief program made up of piano selections by Mrs. L.H. Schmidt and a group of vocal solos by Mrs. N.E. Vitz.

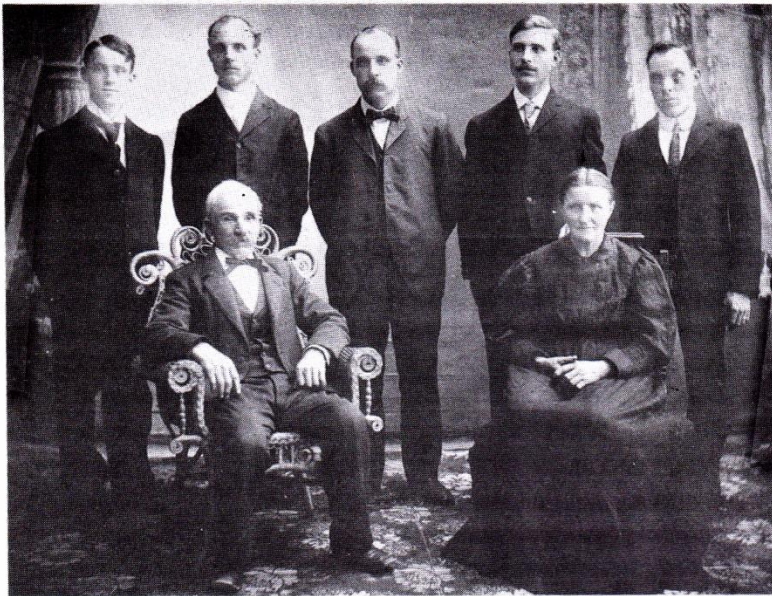
Upon the suggestion of the committee on civic improvement, the association agreed to donate \$75.00 to the Young People's League of St. Paul's Church for the erection of the tennis courts recently completed on North Herman St.



1901 St. Paul's Church Confirmation Class

1 Barth, Alfred John	19 Scheer, Henry Alfred	4 Dammeyer, Adelia Leona
2 Beickman, Oscar Fred	20 Schnelle, Henry Oscar	5 Dammeyer, Emilie Sophia
3 Blumhorst, Fernando Fl.	21 Schulhoff, Glendor William	6 Egbert, Emelie Caroline
4 Brueggeman, William Cle. Herbert	22 Soellman, Leo Henry	7 Ellerman, Ida Margaret
5 Dicke, August	23 Sollman, Henry Lafe	8 Finke, Olga Dorothy
6 Dicke, Edwin Fred	24 Staas, Henry Wilson	9 Geib, Lizzie
7 Dicke, Julius Henry	25 Sunderman, Walter	10 Gress, Edna Marie
8 Gruebmeyer, Edward Henry	26 Thiesing, Oscar Emil Frank	11 Heil, Bertha Katherine Wilhelmina
9 Grundish, Louis Henry	27 Warner, Julius Fritz	12 Heinfeld, Bertha Alvina
10 Hartwig, Harry Fred	28 Wehmeyer, Louis	13 Heinfeld, Ruby Wilhelmine
11 Heil, Clarence	29 Weinberg, Frank Adam	14 Heitman, Ida Friedericka
12 Hespe, Erhard Henry Gerhard	30 Wellman, Emil William	15 Hirschfeld, Fredonia M. Louise
13 Mesenbrink, Leo Henry	31 Witte, Julius Henry	16 Kamman, Amanda Anna
14 Moeller, Ferd Herman	32 Wittenbrink, Harry Fred	17 Laut, Ida Georgine
15 Nedderman, Charles L.	REV. BERTRAM, MINISTER	18 Pohlman, Hilda Josephine
16 Nieter, Roy William Henry	1 Barth, Frances Leona	19 Soellman, Ida Elise A.
17 Quellhorst, Frank Fred	2 Bertke, Martha Wilhelmine	20 Tontrup, Luella Marie
18 Rempe, Ed. Dietrich	3 Brinkmeyer, Wilhelmine Louise	21 Uetrecht, Laura Sophia
		(only 19 girls are pictured)

This picture is from the Lucile (Fark) Moeller collection. Number 15, Fredonia M. Louise Hirschfeld was her mother. If you can match any of these names with the children in the picture, please let us know. You can see the large picture at our museum to get a better view.



THE HOFFMAN FAMILY

Philip Hoffman, Sr., founder of Hoffman Paint & Wallpaper; his wife, Marie (Bisantz), and their 5 sons: Daniel, who lived in Toledo and was a route man for the Page Dairy; Frederick, who became a minister and lived in Cleveland; Philip Jr., who followed in his father's footsteps in the family painting business; Conrad, who also became a minister and served both in Piqua and Cleveland; and Henry, who took over his father's painting business when he died.

[family photo courtesy of John Hoffman]

Philip Hoffman, Sr. was born 4/23/1838 at Duerkheim on the Hardt, Rhenish Bavaria, Germany. In 1867, after finishing his military career, he emigrated to America where his mother and two of his sisters had preceded him several years before. He had learned the trade of painter in the old country and after arriving at Cincinnati he followed this profession.

On 12/19/1868 in Cincinnati, he married Marie Bisantz. Marie was the oldest of a family of 12 children, the daughter of Philip & Margaret (Schmidt) Bisantz. She was born 12/12/1841 at Duerkheim ander-Hurt, Rheinfaiz, Germany and emigrated to America in 1865 with her family. Philip and Marie had 7 sons, 2 of whom preceded their father in death.

In 1875, the Hoffman family came to New Bremen, where Philip continued in the paint business. He mixed paint from raw materials for his own use and also to sell. During the winters, he would make baskets and brushes when there was no painting to be done.

Upon the death of Philip Hoffman, Sr. on 3/25/1920, his son Henry took over the business, assisted by his brother, Philip, Jr. They would hire a horse and wagon to haul their tools whenever they had a job out in the country and in town they would push a 2-wheeled cart. The workers would ride bicycles to the job site. Along with selling paint, they went into the retail wallpaper business and also hung the billboard signs in town.

On 9/3/1926, Philip Hoffman, Jr. died from a broken back and collar bone received in a fall from a scaffold while he was painting a building on the Lawrence Drosch farm south of Chickasaw. He had been born 12/8/1870 in Cincinnati and on 2/15/1899, he had married Catherine Dinkel. They had 3 children: Mrs. Dewey (Margaret) Buckingham, Theodore Hoffman, and Mrs. Louis (Marie) Schmehl. They lived at 101 N. Water St.

Henry Hoffman, born 4/7/1876 in New Bremen, continued to manage the painting and decorating business at 219 N. Main St. until 1950, when he turned the business over to his son, Paul. Henry married Helena Kuck on 1/30/1902 and they had 6 children: Ezra, Paul, Arnold, Mrs. Woodson/"Jim" (Elsie) Hicks, Mrs. Webster (Selma) Geib, and Mrs. Richard (Helen) Simon. Helena was born 9/15/1877 near New Knoxville, the daughter of Ernst & Elizabeth (Niemeyer) Kuck. Henry died 9/2/1953 and Helena died 5/16/1959.

Paul Hoffman was born 5/1/1905, the second son of Henry & Helena Hoffman. On 1/13/1932, he married Edna Wellemeyer and they had a daughter, Mrs. Robert (Virginia) Shaw, and a son, John Hoffman. Paul Hoffman operated the family business for many years, along with his son, John, a 1955 N.B.H.S. graduate. John's son, Craig, is also associated with the business, representing the fifth generation to do so.

(see 1976 picture below)



3 Generations – Craig, Paul, & John Hoffman



In 1948, the painters and wallpaper hangers for Hoffman Paint & Wallpaper were privileged to get to use this 2-tone green Chevrolet "carryall" purchased from Earl Kuenning's Advance Auto Chevrolet dealership on West Monroe St. Tom Kuenning is shown handing the paperwork to Henry Hoffman. Others pictured are: John Hoffman, Paul Hoffman, Lawrence ("Maggie") Roettger, Harry Wiehe, Clifford Bay (N.B.H.S. Industrial Arts teacher), Edward Roettger, and Ward Pape. After about a year, the carryall was traded in on a Chevy station wagon and the used carryall was sold to Cliff Harris, then to Wesley ("Freeze") Howell.
[photo by Jim Taylor Photography - provided by John Hoffman]

In addition to the Hoffman family being in the paint business for over 125 years (thought to be the oldest business still in existence in New Bremen), several members of the family were involved in music.

Ezra Hoffman, born 5/31/1903, was the oldest child of Henry & Helena (Kuck) Hoffman. He graduated from N.B.H.S. in 1921 and, in 1925, from the Conservatory of Music in Cincinnati. He was employed at WLW Radio as an announcer, baritone vocalist and director.

Ezra moved to California to become a professional musician, but instead he followed the family tradition and became a prominent wallpaper hanger. While living in California, he is said to have hung wallpaper for the likes of Ronald Reagan and Jane Wyman (his wife at the time), Dick Powell, and Wilt Chamberlain.

In 1972, Ezra and his wife, Attilia (Petitti), whom he married in 1952, returned to Ohio where they purchased the Sidney Motel. Ezra continued to hang wallpaper part-time for the family business until he retired in 1988. He passed away 1/28/1991. In addition to his wife, he was survived by a daughter, Mrs. William (Esther) Roege.

Arnold Hoffman was a 1928 graduate of N.B.H.S. In 1930, he broadcast over WAIU, Columbus, in a contest

given by the Atwater Kent Radio to determine Ohio's amateur voices. Arnold's number was entitled "Thou Art Like a Flower."
(N.B. Sun - 10/23/1930)

In May, 1948, Arnold E. Hoffman, Professor of music at Miami University, served as a judge at the State Band Contest in Columbus. That summer, he was to take his family to Greeley, Colorado, to study toward a doctor's degree at the Colorado State College of Education. He became the state supervisor of music for the state of Florida and later for the state of North Carolina. Arnold passed away several years ago in North Carolina. He and his wife had 3 children: Ted, Bruce & Rosemary.

Elsie (Hoffman) Hicks was a soloist with the Toledo Opera Co. She was also a music teacher for 36 years, both in Ohio and California.

Selma (Hoffman) Geib operated a beauty shop at the same location as the paint store. Helen (Hoffman) Simon also worked in the beauty shop. Selma is also an avid rose grower, still growing some of the same roses given to her by Rev. & Mrs. Papsdorf when they moved from New Bremen. She is still involved in flower arranging. She and Webster had 2 children: Brian & Kathleen Geib. Helen & Richard Simon also had 2 children: Steven & Barbara.



original photo from John Hoffman (computer enhanced by Lucille Francis - 12/01)

222-224 North Main St. – ca. 1905-1906

This 2-story brick house was purchased by Herman Heinrich Ruese & his son, William Ruese, in 1898-1899 (the deed was filed 12/20/1898). Herman Heinrich & Wilhelmina (Grothaus) Ruese moved into the north (left) side (#224) in 1899 with their two youngest 16-year-old daughters, Florence & Elisabeth (Lizzie), and were living here when this picture was taken. Elisabeth Ruese married Edwin Barth 2/10/1909. H.H. Ruese died here 5/9/1909 and Florence Ruese continued to live with her mother, who died 3/27/1924. She is said to have later married her widowed brother-in-law, Emil Ellerman.

The lady at the upper right, holding a baby, is Mrs. Henry (Helena Kuck) Hoffman. She is holding Paul Hoffman, born 5/1/1905 (father of John Hoffman.) Paul's brother, Ezra, born 5/21/1903, is standing in front. The Hoffmans lived at #222.

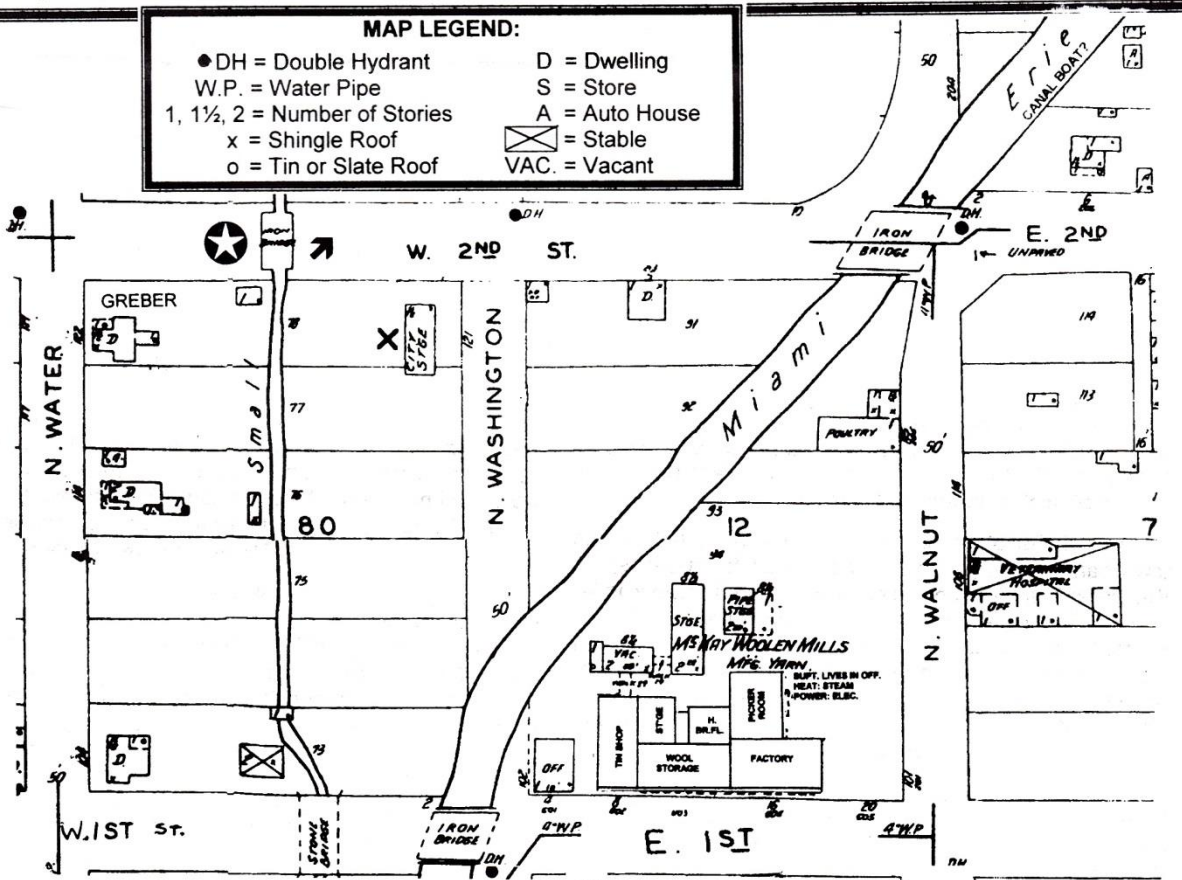
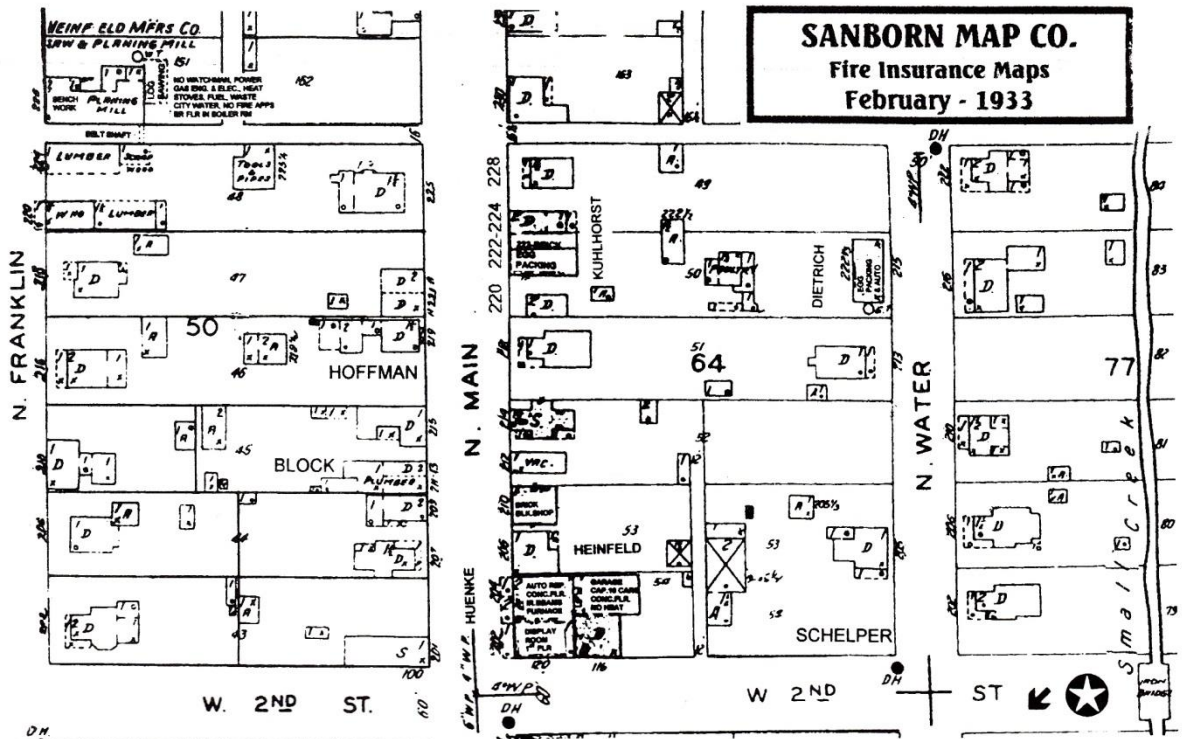
On 8/21/1924, the above house was sold by the Ruese heirs to Leo C. Kuhlhorst, who turned the south part of the brick building into an egg-packing plant. Leo Kuhlhorst died 6/30/1949 and the plant became the property of his wife, Esther (Kuck) Kuhlhorst and her children, Walter Lee & June V. Kuhlhorst.

In November, 1919, the north 48 feet of lot #49 (on left) had been sold by Wilhelmina (Grothaus) Ruese to Laura C. & Ernst Kuck, parents of Esther (Kuck) Kuhlhorst. A house was built there (at 228 N. Main St. – partially shown on the left in the picture on the right.) Since the death of June V. Kuhlhorst on 8/15/2001, both properties were sold at public auction. On 12/15/2001, the June Kuhlhorst home was purchased by Don Gagel of Gagel Plumbing & Heating and the former Kuhlhorst Egg-Packing Plant was purchased by John Hoffman of Hoffman Decorating. The empty lot behind the Kuhlhorst home was purchased by Crown Equipment Corp. (219? N. Water St.)

The south 27 feet of lot #50 (220 N. Main, on the right) was purchased in 1921-1922 by Henry Ruese, son of H.H. & Wilhelmina (Grothaus) Ruese. In June, 1925, he & his wife, Wilhelmine (Kuck) Ruese sold it to Leo Huenke. The house was built about 1928. Mrs. Marvin (Lola Huenke) Dietrich, married 2/20/1925, is said to have remarked that she was the only woman who had ever lived in the house (except her daughters.) It is now owned by Mark Ranyak.



Kuhlhorst Egg-Packing Plant as it looked in 2001



From the Mailbox. . .

Dear Mrs. Francis:

10/6 & 12/15/2001

The Towpath is a joy to receive. I look forward to the publication and read it from cover to cover. Keep up the good cause.

Every article seems to open a door long closed, disclosing a room of rich treasures - memories of events full of the good times growing up in a small rural canal town where we "Frogtown" mercenaries defended our territory against the more numerous and generally more attractive "Cheesequarters" residents.

The town barn and territory east to the towpath, between 1st and 2nd Streets, were scenes of numerous battles between the mercenaries and the notorious "Schelper Gang." The Schelper Gang consisted of a group of playmates - Shirley & Anita Schelper, Donna & "Butch" (Henry, Jr.) Greber and Shirley Weinberg. Ruth Block and Dona Mae Speckman may have been cohorts of the inner circle - they all lived between Water St. and Main St., north of 1st St. at the bottom of the hill leading to the 2nd St. bridge.

I remember a couple of cowboy battles with them in the field behind the town barn between the canal bank and the creek. Anyone traveling through their territory did so at their own risk. The consequences for being captured, I was told, were not pretty. Donna (Greber) Conradi, as an insider, would have first-hand knowledge.

My recollections of N.B. in the late 1930s and early 1940s may be different from that of other individuals - a child with a "Frogtown" upbringing would come away with a different perspective than a "Cheese Quarter-Pounder."

[EDITOR'S NOTE: *The people living east of the Miami-Erie Canal were deemed to be from "Frogtown", while those living west of the canal were from "Cheesequarters" (the creamery was located at the west edge of town.) (In 1946, there were even baseball teams called the Frogtown Red Sox & the Cheesequarter White Shirts - N.B.Sun: 8/1/1946)*

The town barn was located west of what was then North Washington St. at the intersection of West 2nd St. where, in the early 1960s, it was in the path of what became the new Washington St. / St. Rt. 66 North. It was near the present location of Westy's Warehouse Carpets.]

One of the other recollections of playing behind the town barn was a large tank of tar used for street repair. We would break off a piece of tar and chew it. Chewing tar and spitting helped round out the cowboy image. The tar probably contained all kinds of carcinogens. Plus, in today's world, we would be charged with a misdemeanor and trespassing. Molly Wehrman (the village marshal) and night constable Henry Greber (Donna's father) knew better than to stir up trouble with the towpath desperadoes.

Finally, I recall a summer in 1941 or 1942 when Dale Braun, Valentin Rabe and I heard of a canal boat that was buried in a "boat turn-a-round" just north of McKay's Woolen Mill, north of the 2nd St. bridge where the Eddie

Wehrman property abutted the canal bank (*where Bud & Louise Hay now live.*) We dug a number of holes but never found anything resembling canal boat remains unless its name was Campbell soup.

South of McKay's (across 1st St.) was Orlando ("Put") Gilberg's house. I delivered the *Columbus Dispatch* to the Gilberg residence from 1940-1944. I always thought "Put" was an interesting nickname.

Such good times....

Thanks again,

Paul ("Pup") Poppe - Edmonds, Washington

—♦><♦—

Dear Lucille,

10/8/2001

You sent me a complimentary copy of the October, 2001 issue of *The Towpath* which contained much information about my family. I enjoyed reading it all so much! Much of the information was new to me - I had no idea there was another Sunderman family in the New Bremen area. The biographical sketches of my aunts and uncles also contained things that either I did not know or had long since forgotten!

I am enclosing a check as a small contribution to the great work the N.B.H.A. is doing.

Sincerely,

Shirley S. (Sunderman) Kostik
(daughter of Walter & Clara Sunderman)
Arlington, Virginia

—♦><♦—

10/8/2001

I would like to thank you for the complimentary copy of the October, 2001 issue of *The Towpath* which includes so much information about early Sunderman families in this country. Some of it I had seen before, but much I had not. It is fascinating reading. Thanks so very much.

Eloise (Sunderman) Merrick
(daughter of Walter & Clara Sunderman)
Weatherford, Texas

—♦><♦—

Dear Lucille:

10/17/2001

A big "Thank You" for the work on the October, 2001 issue of *The Towpath* featuring the Sunderman family genealogy and photos.

Your July, 2001 issue contained a letter from Marian (Frey) Engle, also a 1942 picture of her as a "manager's assistant" at the old swimming pool. I remember Marian - we played paper dolls together about 60 years ago!

Thanks again.

Marilee (Sunderman) Besanceney
Oakmont, PA (new address)

—♦><♦—

Dear Mrs. Francis:

10/22/2001

Your October, 2001 complimentary copy of *The Towpath* was received with much interest and enjoyment. Enclosed is a check for \$10.00 so that we may continue receiving future issues. Also enclosed is payment for "Recipes and Reminiscence" written by my "cousin", John Dickman. I am a daughter of Ferd Sunderman who was a brother to John's grandmother, Lillie (Sunderman) Dickman.

Sincerely,
Mrs. Leland (Marjorie Sunderman) Fox
Findlay, Ohio

A note from Mary (Dickman) Lirones: 11/28/2001
I just got around to opening some old mail as I was out of town much of August, September and October. I read the October issue of *The Towpath* from cover to cover and, as always, found it fascinating.

My parents, Hilmer & Florence (Urtel) Dickman, and my brother Larry & I visited my grandparents, Christ & Louisa (Harjehausen) Dickman, at 10 South Main St. every summer. I was 7 years old in 1940 and one of the things I loved about New Bremen from then on was the swimming pool. It was just a couple of blocks from Gramma & Grampa's house. My uncle & aunt, Fred & Frieda (Dickman) Koenig and their daughter, Dorothy, lived in the same house. [EDITOR'S NOTE: This was the house built by Dr. Michael Stone in 1890-91 and which was razed several years ago.]

Uncle & Aunt August & Lillie (Dickman) Egbert lived across the street at 25 South Main; Uncle & Aunt Ray & Bernice (Dickman) Koenig lived a couple of blocks away at 12 North Franklin St.; there was Great Uncle Theodore Dickman who lived at the north edge of town; Great Aunt Rosina (Dickman) Heinfeld at 206 N. Main; and Uncle & Aunt, Emil & Nellie (Dickman) Poppe, who lived in Piqua, so we were surrounded by a ton of loving relatives.

Going to the movies, the Arcade Dept. Store, and playing along the canal and the locks are wonderful New Bremen memories, along with playing with Grampa in his barn wood-shop.

Enclosed is \$10.00 for John Dickman's book, "Recipes and Reminiscence."
Mary (Dickman) Lirones
Saline, Michigan

Dear Friends: 9/28/2001
Thank you for sending us a copy of the October, 2001 issue of *The Towpath*. It made interesting reading for both of us. We chuckled over the crow hunter's story - a flock of crows live in the woods south of our converted barn home.

My wife, Alice, who is in her second 6-year term as one of the three supervisors who run Wallace Township (12 square miles - 1990 population, 3000+) will show our Historical Commission *The Towpath* as a model for its own future work. New Bremen is two decades older than we are.

I have mailed you a copy of my book, *E.J. Halsema: Colonial Engineer*, published in the Manila, Philippines, metropolitan area in 1991. It is a revision of the articles that appeared in the *Bulletin of the American Historical Collection* there and has received wide recognition.

My sister, Betty (Halsema) Foley's *Keepsake*, the autobiography of her life up to her liberation from a Japanese internment camp in 1945, has been published by her son, Douglas Halsema Foley, Copyfast Printing, 9015 E. Via Linda #108, Scottsdale, AZ 85258. She describes her visits to New Bremen in 1916, 1927-28, and 1933. He is about to publish a revised edition. [Betty (Halsema) Foley passed away on August 8, 1997.]

I hope that you will acquire an e-mail address and eventually a Web-site. [see NOTE below next letter]
Sincerely,
Jim Halsema, Historian
Glenmoore, Pennsylvania

Hello, 11/4/2001
I am a member of your Association and enjoy reading about old New Bremen, the birthplace of my maternal grandmother, Marie Clara (Wellman) Lorenz. In the last paragraph on page 9 of your July, 2001 issue of *The Towpath*, you stated that "Nothing further is known about what became of Emil Vogelsang except he was living in Los Angeles when his sister, Emilie (Vogelsang) Grothaus, died in August, 1942."

For those who might be interested, I found the following information on the Internet via rootsweb.com - CA death records: Emil Vogelsang, born 5/7/1876 in Ohio, mother's maiden name Kuenning, died 3/24/1956 in Los Angeles County, California.

William R. Bell - Toledo, Ohio
[NOTE: The above letter was sent to New Bremen's website at: newbremen@nktelco.net and was forwarded to Tom Braun at: TGBraun@nktelco.net]

To Tom & Ginny Braun: 12/17/2001
How I wish I could have been there for all the festivities for Lloyd Laut's 99th birthday party Sunday, December 16th, at Otterbein Retirement Community at St. Marys. My sister, Janet (Garmhausen) Bock of Columbus, was able to attend, however, and reported back to me. Sure sounded like a swell party! I'm sure Lloyd loved every minute of it too - it's really true what people say about a small town having a big heart!

Thanks again, Tom, for your time and help when Janet & I came to check out some Garmhausen genealogy some months ago. That was great! I then got buried under wedding plans for a daughter and am just now resurfacing and thinking about getting back to projects I'd put on the back burner.

The events of 9/11 in New York City didn't help - what a mess! My husband commutes to an office in mid-town with a full view of lower Manhattan and I can see the tip of Manhattan from our village park on the Hudson River here. So, it's all VERY REAL for us!

I wish you a very Merry Christmas and peaceful New Year. Kindest regards.
Betsy (Garmhausen) Hunter
Dobbs Ferry, New York

[EDITOR'S NOTE: Betsy is one of five of our New York readers who live in the area near the former World Trade Center. We would like to hear from the rest of you as to how the terrorist attack of 9/11 affected you.]

12/18/2001
I would like to purchase a 1-year membership to the N.B.H.A. for my sister, Jeanette Conrad of Beaver, Pennsylvania. I am the granddaughter of Arthur & Emma (Botkins) Frey. My mother, Ruth L. (Frey) Bushroe, was born in N.B. in 1908.
Sincerely,
Mrs. Larry (Shirley) Williams - Ada, Ohio

BITS & PIECES

Related to other items inside

KUHLHORST EGG-PACKING PLANT

The Leo Kuhlhorst Egg-packing Plant was first operated in a small brick building at 210 N. Main St. (formerly Aue's Blacksmith Shop.) After Leo Kuhlhorst purchased the Ruese house at 222-224 N. Main, he moved his egg-packing operation into the south part of the house at #222. The north part of the house (#224) still served as an apartment, along with the upstairs rooms.

[Robert Weinberg, Jr. lived there as a young boy. He has told the story that one day when playing on the front steps, he dropped a quarter between the steps and the foundation. He never did get his quarter back!]

N.B. SUN - 8/17/1939: Mr. & Mrs. Warren Merritt, along with their daughters, Mrs. Edward McCormick & son, Edward, Jr. and Mrs. & Mrs. Jack McCaffrey & daughter, Patricia, arrived here from Nelsonville, N.Y. to visit with Mrs. Merritt's mother and sister, Mrs. August Broerman and Hilda Broerman (telephone operator) at their residence at 418 N. Main St. Mr. Merritt formerly conducted the egg-packing business now operated by Leo C. Kuhlhorst. They moved to New York about 21 years ago (1918?).

+++++

DIETRICH EGG-PACKING PLANT

Jerry Dietrich first operated an egg-packing operation in his garage at 231 N. Franklin St. In September, 1928, he purchased the east half of lot #50 from Wilhelmine (Kuck) Ruese. He then moved the plant to 215 N. Water St., directly behind the home of Marvin & Lola (Huenke) Dietrich and the Kuhlhorst plant. There was a poultry house between the two egg-packing plants, as shown on the 1933 Sanborn Fire Insurance map on page 13.

N.B. SUN - 5/12/1932: The Marvin Dietrich egg-packing house on North Water St. was ablaze at 1:45 this afternoon. Firemen worked diligently to prevent the spread of the flames to a gasoline pump in front of the building and to the Levi Neuman home next door. The egg-packing house and garage were totally destroyed, however. The loss is estimated at \$1000, partially covered by insurance."

+++++

FIRE CAUSES HEAVY LOSS

N.B. SUN - 10/19/1934: One of the most obstinate fires of recent years was fought by the fire department Saturday evening. The blaze was first discovered in a shed at the rear of the Mrs. Rosine Heinfeld home at 206 N. Main St. By the time the fire department arrived, the flames were spreading to a large barn owned by Alton Schelper and were threatening the Schelper home and the Leo Huenke Garage at 204 N. Main.

More than 10 tons of baled hay stored in the Schelper barn caught fire rapidly. The barn has a metal roof and firemen eventually were able to hold the blaze to a restricted area. Two horses, wagons, and other equipment were removed successfully from the barn, which was partially destroyed. The Heinfeld shed burned to the ground, although a part of its contents also were saved.

+++++

N.B. SUN - 8/14/1932: Mrs. Rosine Heinfeld, residing north of N.B., this week purchased the August Aue residence at 206 N. Main St. Mrs. Heinfeld and her daughter, Norma Heinfeld, plan to take possession as soon as the residence is vacated by Mr. Aue, who probably will go to Dayton to make his home with his son and daughter-in-law, Mr. & Mrs. Alvin Aue.

NEW MEMBERS THIS QUARTER (THRU 12/28/2001)

10/06/2001 Bushman, Florene (Baber) - New Bremen
09/20/2001 Bushman, Viola (Fledderjohn) - Minster, Ohio
12/20/2001 Conrad, Jeannette (Bushroe?) - Beaver, Pennsylvania
10/23/2001 Fox, Marjorie (Sunderman) - Findlay, Ohio
10/02/2001 Halsema, James J. - Glenmoore, Pennsylvania
11/27/2001 Metz, David - St. Marys, Ohio
12/05/2001 Moeller, Mary E. - New Bremen
12/22/2001 Nedderman, Mrs. Virgil (Loree Doenges)(TR) - New Bremen
12/06/2001 Sollman, Elodie (Lanfersieck)(Re-joined)
09/20/2001 Thompson, Lynne (Harris) - Celina, Ohio (Re-joined)

MEMBER DEATHS THIS QUARTER

12/21/2001 Headapohl, Paul (died 12/21/2001)
12/22/2001 Nedderman, Virgil (died 12/22/2001)

MEMORIAL DONATIONS

The following memorial donations have been received this quarter:

In memory of Roger Schaefer
by his aunt, Verdella Schaefer

In memory of Lendor Sollman
by Elodie Sollman

"THE TOWPATH" Editor / Membership Report

The best thing to happen for me this year was the discovery of the existence of another research "tool" - the Sanborn Map Co.'s fire insurance maps (see an example on page 13.) After I learned about these maps from a researcher in California, we were able to purchase microfilm of the maps and place it in the N.B. Library for public use. Since receiving the microfilm, I copied all the maps and pieced them together to get complete sheets measuring about 18" x 22". Thanks to Crown Equipment Corp., we now have 2 sets of copies of these large maps - one at the Library and one at our museum. We are planning to purchase a "poster-type" flip display in order to be able to put these maps on display for the public to see when you visit our museum. This is the same kind of display the curators are going to use to display old copies of the *New Bremen Sun*. These display units cost \$300.00 each, so we are waiting until our membership dues start coming in for this year.

Our membership list shows a net increase of 45 members since the end of last year. We continue to get new members/subscribers through the complimentary copies of *The Towpath* we send out, but every once in a while, there is a surprise from someone we had never heard of. We lost 20 members due to death.

I appreciate hearing from you readers concerning articles that I have published or just about your memories of New Bremen. Many times your letters and/or pictures are the inspiration for future articles. So..... keep writing! Other people like to read your letters too.
Lucille Francis, Editor

TOTAL MEMBERSHIP AS OF 12/31/2001 = 793
793 = 83 CMs + 15 CMLM + 283 LMs + 412 Yearly

MAILING ADDRESSES 12/31/2001

AK (1), AR (2), AZ (4), CO (4), DC (2), DE (1), GA (4), IA (1), IL (7), KS (2), KY (3), MA (2), MD (5), ME (1), MN (3), MO (4), NC (4), NE (1), NM (2), NV (2), NY (9), OK (4), OR (3), PA (6), SC (4), SD (1), TN (3), UT (2), VA (3), WA (4), WI (7), Canada (2) <<<TOTAL OUT OF STATE = 199>>>
<<<TOTAL OHIO = 526>>> <<<NEW BREMEN = 281>>>